
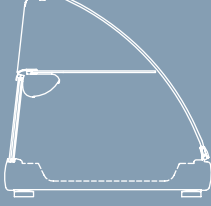
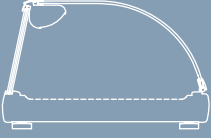


Bandeja fría expositora tapas

Tapas refrigerated display case

		
BCC-4-I 144112000500		BCL-4-I 144112300500
BCC-6-I 144112100500	BCCD-6-I 144112600500	BCL-6-I 144112400500
BCC-8-I 144112200500	BCCD-8-I 144112700500	BCL-8-I 144112500500

Características Técnicas

Technical Data

MODELO REF.	LARGO LENGHT	ALTO HEIGHT	FONDO DEPTH	POTENCA FRIG FRIG POWER	CONSUMO CONSUMPTION	GN1/3-40 GN1/3-40	PESO NETO NET WEIGHT	TENSION MONOFASICA SINGLE PHASE VOLTAGE	REFRIGERANTE COOLANT
BCC-4	1050 mm	250 mm	415 mm	160 W	330 W	4	33 Kg.	220 V - 50/60 Hz	R-134a
BCC-6	1400 mm	250 mm	415 mm	160 W	330 W	6	40 Kg.	220 V - 50/60 Hz	R-134a
BCC-8	1755 mm	250 mm	415 mm	160 W	330 W	8	48 Kg.	220 V - 50/60 Hz	R-134a
BCCD-6	1400 mm	400 mm	415 mm	160 W	330 W	6	40 Kg.	220 V - 50/60 Hz	R-134a
BCCD-8	1755 mm	400 mm	415 mm	160 W	330 W	8	51 Kg.	220 V - 50/60 Hz	R-134a
BCL-4	1050 mm	250 mm	415 mm	160 W	330 W		33 Kg.	220 V - 50/60 Hz	R-134a
BCL-6	1400 mm	250 mm	415 mm	160 W	330 W		40 Kg.	220 V - 50/60 Hz	R-134a
BCL-8	1755 mm	250 mm	415 mm	160 W	330 W		48 Kg.	220 V - 50/60 Hz	R-134a

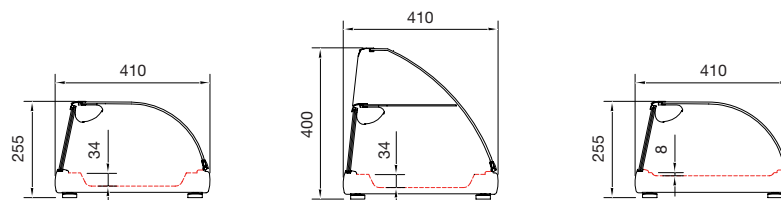
Cubeta GN incluida en el precio • GN containers included in price

Características Técnicas

Characteristics

- Exterior en acero inox AISI 304 18/10 con perfiles de aluminio anodizado
- Fondo interior embutido en acero inox AISI 304 18/10
- Aislamiento de poliuretano inyectado ecológico libre de CFCs, densidad 40 Kg.
- Iluminación interior.
- Interruptor general luminoso.
- Compresor hermético ventilado.
- Control digital de temperatura
- Temperatura de trabajo +4° +8° con 32°C de ambiente.
- Puertas frontales transparentes
- BCC - BCCD: Bandeja interior embutida, preparada para cubetas GN1/3-40 (incluidas). Cubetas GN 1/340 incluidas.
- BCL: Bandeja interior embutida, preparada para platos (no incluidos)

- AISI304 18/10 stainless steel exterior with hard anodised aluminium profile excluding backing.
- AISI304 18/10 stainless steel molded interior
- Injected polyurethane insulation, CFCs free, density of 40 kg.
- Interior lighting.
- Luminous main switch.
- Hermetic ventilated compressor.
- Digital control.
- Working temperature +4° +8° with 32°C ambient temperature.
- Front doors
- BCC - BCCD: 18/10 Stainless steel molded interior tray prepared for GN 1/3 casks 40mm deep (included) GN 1/340 containers, (included).
- BCL: 18/10 Stainless steel molded interior tray prepared for dishes (not included)

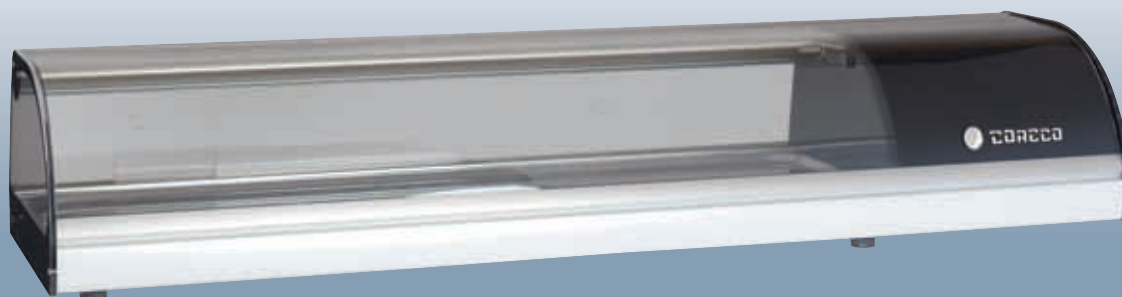




BCC-6

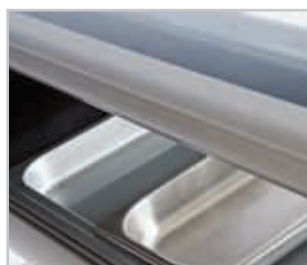


BCCD-6



BCL-6

FONDO EMBUTIDO
CUBETAS GN 1/3

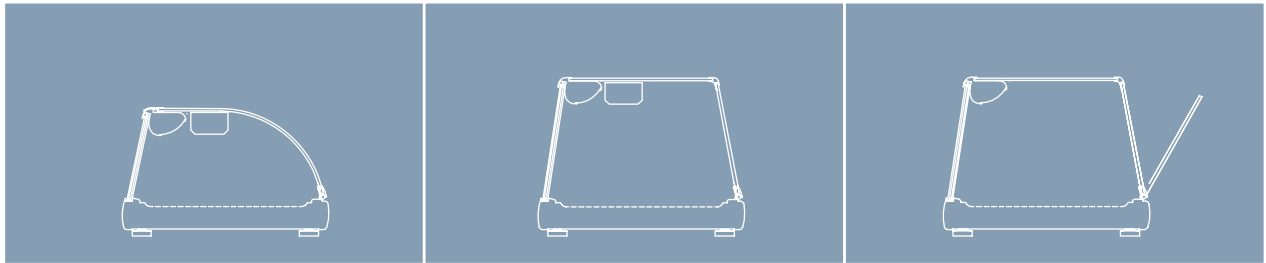


FONDO EMBUTIDO
PARA PLATOS



Bandeja fría expositora sushi y pinchos

Pinchos and sushi refrigerated display case



BCS-4-I 144113600500		
BCS-6-I 144113400500	BPS-6-I 144113200500	BPLA-6-I 144113000500
BCS-8-I 144113500500	BPS-8-I 144113300500	BPLA-8-I 144113100500

Características Técnicas

Technical Data

MODELO REF.	LARGO LENGHT	ALTO HEIGHT	FONDO DEPTH	POTENCA FRIG FRIG POWER	CONSUMO CONSUMPTION	GN1/3-40 GN1/3-40	PESO NETO NET WEIGHT	TENSION MONOFASICA SINGLE PHASE VOLTAGE	REFRIGERANTE COOLANT
BCS-4	1050 mm	250 mm	415 mm	160 W	330 W			220 V - 50/60 Hz	R-134a
BCS-6	1400 mm	250 mm	415 mm	190 W	375 W		35 Kg	220 V - 50/60 Hz	R-134a
BCS-8	1755 mm	250 mm	415 mm	190 W	375 W		35 Kg	220 V - 50/60 Hz	R-134a
BPS-6	1400 mm	315 mm	415 mm	190 W	375 W		44 Kg	220 V - 50/60 Hz	R-134a
BPS-8	1755 mm	315 mm	415 mm	190 W	375 W		44 Kg	220 V - 50/60 Hz	R-134a
BPLA-6	1400 mm	315 mm	415 mm	160 W	330 W		40 Kg.	220 V - 50/60 Hz	R-134a
BPLA-8	1755 mm	315 mm	415 mm	160 W	330 W		51 Kg.	220 V - 50/60 Hz	R-134a

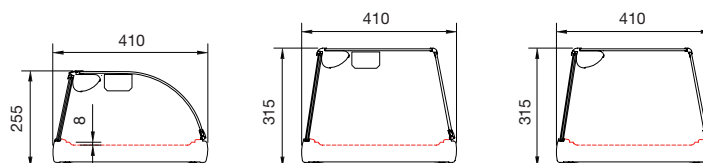
Cubeta GN incluida en el precio • GN containers included in price

Características Técnicas

Characteristics

- Exterior en acero inox AISI 304 18/10 con perfiles de aluminio anodizado
- Fondo interior embutido en acero inox AISI 304 18/10
- Aislamiento de poliuretano inyectado ecológico libre de CFCs, densidad 40 Kg.
- Iluminación interior.
- Interruptor general luminoso.
- Compresor hermético ventilado.
- Control digital de temperatura
- Temperatura de trabajo +4° +8° con 32°C de ambiente.
- Puertas de frontales transparentes
- BCS- BPS: Evaporador adicional sobre el producto
- BPLA: Apertura frontal para autoservicio

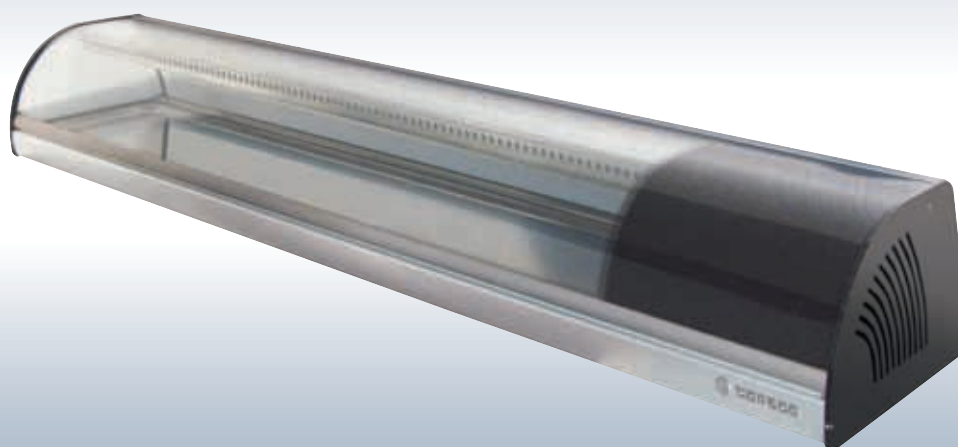
- AISI304 18/10 stainless steel exterior with hard anodised aluminium profile excluding backing.
- AISI304 18/10 stainless steel molded interior
- Injected polyurethane insulation, CFCs free, density of 40 kg.
- Interior lighting.
- Luminous main switch.
- Hermetic ventilated compressor.
- Digital control.
- Working temperature +4° +8° with 32°C ambient temperature.
- Front doors
- BCC - BCCD: Additional evaporator over the product
- BCL: Front opening for self-service



Bandeja fría expositora sushi y pinchos
Pinchos and sushi refrigerated display case



BPLA-6



BCS-8-I

APERTURA FRONTAL
AUTOSERVICIO

